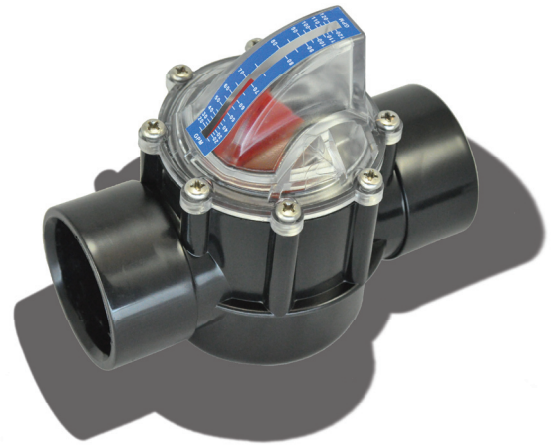


FlowVis™ Flow Meter

Know the Flow.

Introducing FlowVis™. The most advanced, affordable, and reliable precision Flow Meter designed specifically for pools, spas, fountains, and water features.



Customers often ask, “what additional head does FlowVis™ add to my system?” A more appropriate way to address this question is to ask “how much additional electrical energy will be required by the pump to achieve the same flow rate?”

The following data is the **actual** power required by a 2.0 HP, 3-phase pump to produce the same flow rate with and without FlowVis™

Flow Rate GPM	Power (kW) with FlowVis™	Power (kW) without FlowVis™	Additional watts required
40	0.145	0.144	1
50	0.183	0.183	0
60	0.317	0.317	0
70	0.410	0.407	3
80	0.702	0.702	0

The average additional power required is just 0.8 watts

Example:

From the above data, the number of hours required to use 1 kW = 1,250 (1,000 / 0.8)

At \$0.10 per kWh and a pool pump running 12 hours per day for 365 days per year, the FlowVis™ will result in an additional cost of \$0.35 per year to run the pump!

TECH TIPS - FlowVis™ Effect on Head

